

CX connectors

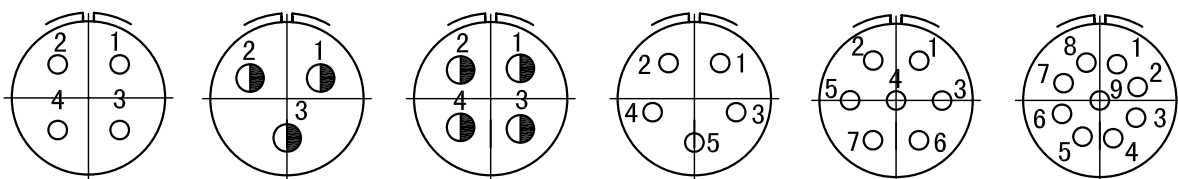
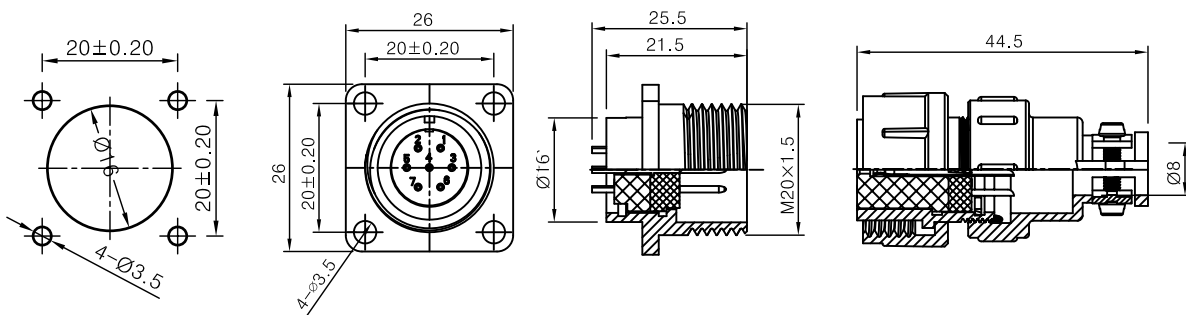
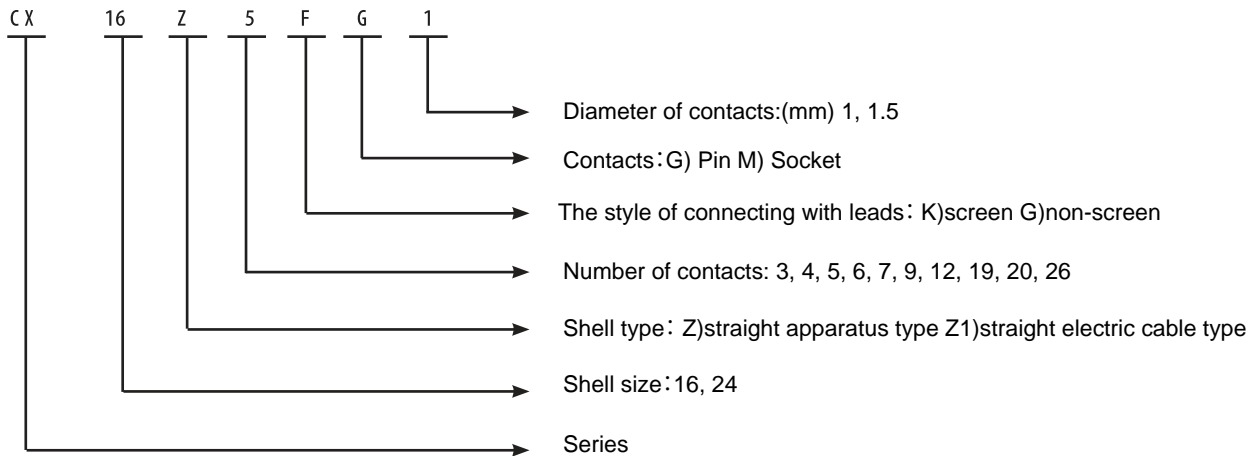
CX type of connector has two specifications of diameter 16, 24(mm) crust, the contact pair has 9 kinds of 3, 4, 5, 6, 7, 9, 12, 19, 20, 26 pin core, it can match shield and non-shield cable. The outline is straight It could be used for the power connection of instruments, electrics and wireless equipments cables or crossing wall clapboard.



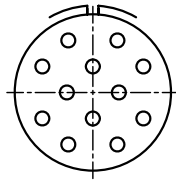
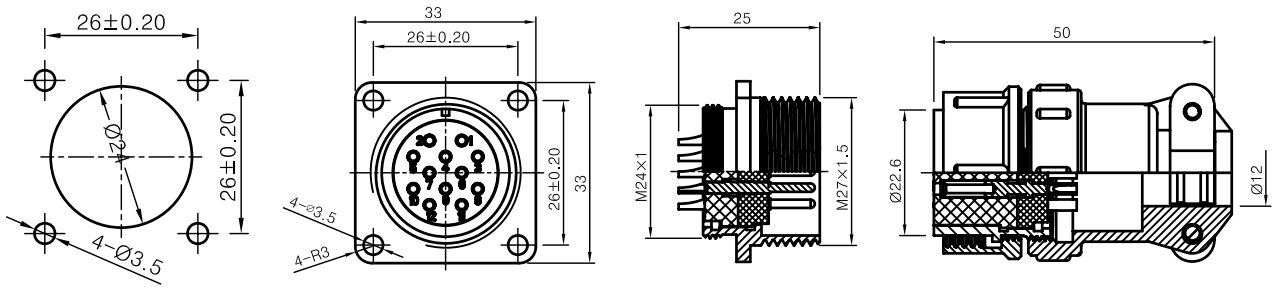
Main technical character

Environmental humidity: -55~+ 85 °C
 Relative humidity: it can reach 93% at 40 centigrade;
 Vibration: acceleration reaches 100 m /s 2
 Collision: acceleration reaches 250 m /s 2
 Rated current 5A
 Contact resistance:

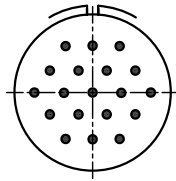
diameter of contact pair	1	1,5
Contact resistance(bullion-plated)	0,005	0,0025



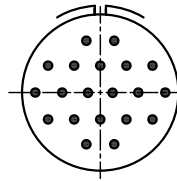
CX16Z4FG1 CX16Z3FG1,5 CX16Z4FG1,5 CX16Z5FG1 CX16Z7FG1 CX16Z9FG1 $\Phi 1.0 \text{ O}$ $\Phi 1.5 \text{ O}$



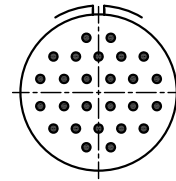
CX24Z12FG1



CX24Z19FG1,5



CX24Z20FG1,5



CX24Z26FG1,5

Φ 1.0 ○

Φ 1.5 ●