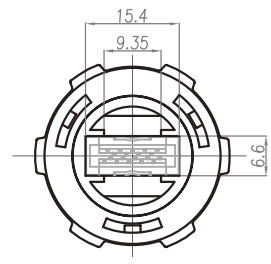
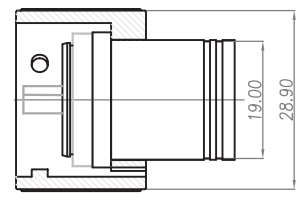
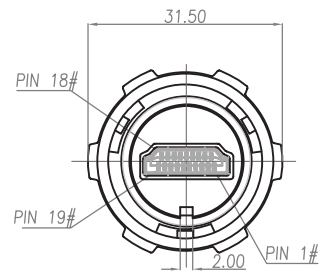
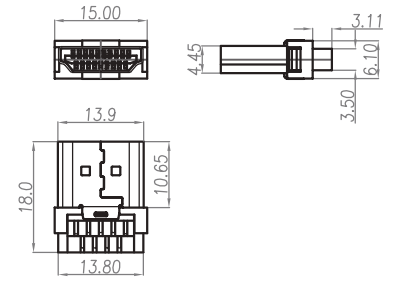
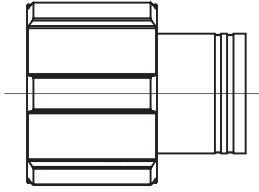


Rev	Revisions	Rev.Drawn	Date
A		Du	25.11.2008



HDMI 19PIN (M) 馬口鐵專用

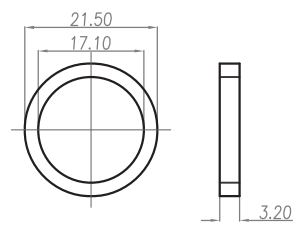
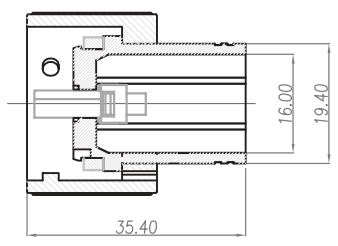


TABLE A

P/N	DESCRIPTION	COLOR
HM-19M1-19	防水HDMI(M) 成品(BLACK)A TYPE	BLACK
HM-19M1-21	防水HDMI(M) 成品(GREEN)A TYPE	GREEN
HM-19M1-25	防水HDMI(M) 成品(BLUE)A TYPE	BLUE

防水HDMI(M) 成品(BLACK)A TYPE

扁型 O-RING(17.1*2.2*3.2)

1. MATERIAL :
- 1-1. EXTERNAL HOUSING : PBT UL94V-0 ; COLOR : TABLE A
 - 1-2. EXTERNAL NUT : PBT UL94V-0 ; COLOR : TABLE A
 - 1-3. O-RING :SILICONE ; COLOR : BLACK
 - 1-4. HDMI:
 - 1-4-1. FRONT HOUSING: LCP.
 - 1-4-2. BACK HOUSING: PBT+GF30%.
 - 1-4-3. CONTACT:PHOSPHORUS BRONZE.
 - 1-4-4. SHELL:BRASS
2. FINISH :
- 2-1. CONTACT : 15 MICRO INCHES MIN. GOLD PLATED
SOLDER TAILS: TIN 100u"
UNDER PLATE : NICKEL
 - 2-2. SHELL: GOLD FLASH

SGS Report No.:	Customer:	Part No.:
		QC3098(TABLE A)
Title: 防水HDMI(M) 馬 A TYPE		
Drawn By: Storm.Li	SCALE: 1:1	SHEET: 1/1
Checked By: du	REV: A	DWG NO.: SST-081125-01
Approved By: Tony	TOLERANCE: X: ±2MM .X: ±0.25MM .XX: ±0.1MM .XXX: ±0.1MM	
Thire angle Projection General Dimesion Tolerance		Units: mm