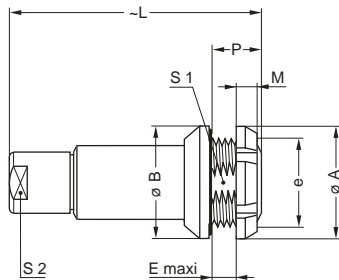


## Series K

### Technical Characteristics

#### Mechanical and Climatical

Characteristics	Value	Standard
Endurance	> 5000 cycles	IEC 60512-5 test 9a
Humidity	up to 95% at 60° C	
Temperature range	- 55° C, +250° C	
Resistance to vibration	10-2000 Hz, 15 g	IEC 60512-4 test 6d
Shock resistance	100 g, 6 ms	IEC 60512-4 test 6c
Salt spray corrosion test	> 144h	IEC 60512-6 test 11f
Protection index (mated)	IP50	IEC 60529
Climatical category	55/175/21	IEC 60068-1



## Metal housing models

#### Electrical

Characteristics	Value	Standard	
Shielding efficiency	at 10 MHz	> 75 dB	IEC 60169-1-3
	at 1 GHz	> 40 dB	IEC 60169-1-3

#### Note:

the various tests have been carried out with FGG and EGG connector pairs, with chrome-plated brass shell and PEEK insulator.

**PEG** Fixed socket, nut fixing, key (G) or keys (A to F, L and R), cable collet (back panel mounting)

Reference		Dimensions (mm)								
Model	Series	A	B	e	E	L	M	P	S1	S2
PEG	0K	18	18	M14x1.0	5.0	34	3.5	8.5	12.5	8
PEG	1K	20	20	M16x1.0	6.5	45	3.5	10.0	14.5	9
PEG	2K	25	25	M20x1.0	4.0	54	3.5	7.5	18.5	12

## Order information K

FG G - 2 K - 310 - C L A C 65 Z

1 2 3 4 5 6 7 8 9 10 11

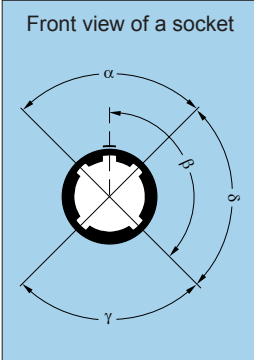
1. Model: F — plug; E — cable receptacle; H — waterproof receptacle;  
P — receptacle; X — receptacle PCB soldering
2. Key
3. Size
4. Series
5. Number of contacts: 306 - 10 contacts
6. Body material: C — chromium-plate brass
7. Insulator material: L — PEEK; Y — PEEK, long insulator, crimp
8. Type of pin: L — socket, solder; A — pin; M — socket, crimp;  
Y — socket, crimp; V — socket, elbow print
9. Collet mechanism: C — collet for K socket
10. Collet diameter: 62 — 6,5 mm
11. Z - shock absorber for cable, option

## Alignment Key

Series K

### Alignment Key and Polarized Keying System

K series connector model part numbers are composed of three letters. The LAST LETTER indicates the key position and the contact type (male or female).

Front view of a socket 	Reference	Nb of keys	Angles	Series			Contact type	
				0K	1K	2K	Plug	Socket
	G	1		0°	0°	0°	male	female
	A	2	α	30°	30°	30°	male	female
	B	2		45°	45°	45°	male	female
	C	2		60°	60°	60°	male	female
	D	2	γ	95°	95°	95°	male	female
	E	2	β	120°	120°	120°	male	female
	F	2		145°	145°	145°	male	female
	L	2	γ	75°	75°	75°	female	male

Note:

- First choice alternative
- Special order alternative